

# VOLUSON 730 PRO V

Solution for the Clinical Practice



# VOLUSON 730 PRO V

## A Comprehensive Solution for the Clinical Practice



GE Healthcare continues to elevate Women's Imaging with the latest introduction to our world-class Voluson platform, the Voluson 730 PRO V. Three-dimensional ultrasound has changed the nature of ultrasound and the Voluson 730 PRO V demonstrates continued technology leadership with RealTime 4D, up to 10 volumes per second.

Throughout the Voluson platform, GE's commitment to customer satisfaction and clinical utility are evident. The Voluson 730 PRO V demonstrates that commitment with:

### ◆ Dimensional Technology

- Exceptional 2D image quality
- Unparalleled 4D performance
- Superior rendering capabilities

### ◆ Diagnostic Advantages

- Coded Harmonic Imaging and Coded Excitation for enhanced clarity in 2D imaging
- FFC (Focus-Frequency-Composite), for penetration & resolution for the difficult-to-scan patients
- Visualizing fetal movement with RealTime 4D

### ◆ Dedication and Support

- User friendly and ergonomic console
- GE Healthcare sponsored 3D users forum: <http://www.sonoportal.net>

### ◆ Digital Solutions

- Exceptional data archiving capabilities through Sonoview and integrated DVD/CD
- ViewPoint OB reporting and image archiving tools providing a complete office solution

### Biometry Data

OB Report									
Fetus A12		Page 1/2		13:01:23		17-07-2003			
Institution	GE Medical Systems	Date of Exam	17-07-2003						
ID	A09004-2003-07-17-0002	Ref. Phys.							
Name	Person Test Check	Diag. Phys	Dr. med. Arzt						
GDB	10-10-1975	Sonogr.							
Indication		Exam Type							
Fetus A									
LMP	08-10-2002	Ultrasound	EFW	Hadlock1 (AC, FL)					
EDD (LMP)	15-07-2003	EDD (AUA)	16-07-2003	EFW					
GA (LMP)	15w2d	AUA	15w1d	CGA(EFW)					
Fetal Biometry									
	1	2	3	Avg.	CGA	Range	Dev		
BPD	Hadlock-02	3.08		3.08 cm	15w2d	13w6d - 16w6d	+0.4SD		
OFD	Jenani	3.95		3.95 cm	15w4d		49%		
HC (BPD/OFD)	Hammanni			10.94 cm	14w6d		-0.55D		
Calc									
CI (BPD/OFD)	80	%		(70 - 86%)					

### SonoPortal.net



### 3D Sonoarea

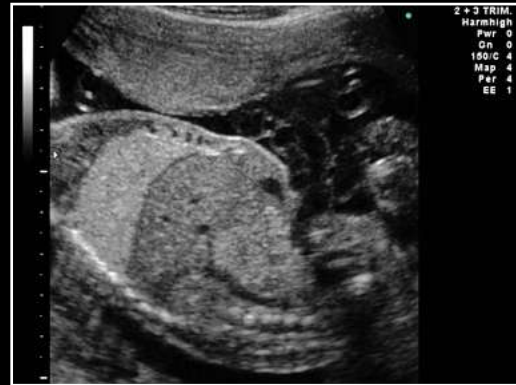


The Voluson 730 PRO V is ideally suited for the OB/GYN practice looking to improve patient care through excellent 2D and 4D imaging.

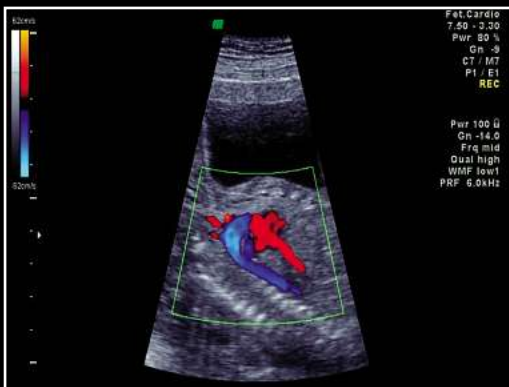
## Fetal Analysis



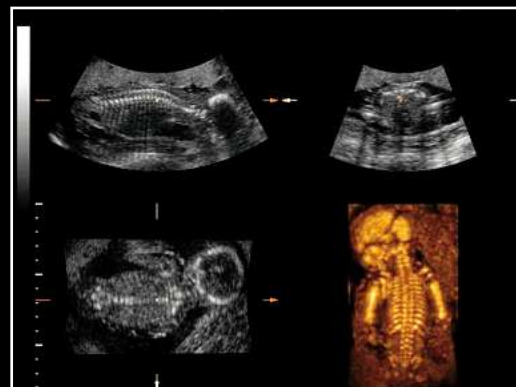
**1st Trimester Yolk Sac**  
Endocavitary



**Fetal Abdomen**  
2D View



**Fetal Aortic Arch**  
Color Flow



**Fetal Spine**  
Multiplanar View and Rendered View



**Fetal limbs, Ear**



**Fetal Face, Fingers**

For more than 100 years, healthcare providers worldwide have relied on GE Healthcare for medical technology, services and productivity solutions.

No matter what challenges your healthcare system faces – you can always count on GE to help you deliver the highest quality healthcare.

For details, please contact your GE representative today.



## GE Healthcare

GE Ultraschall Deutschland GmbH & Co. KG:  
Beethovenstr. 239, D-42655 Solingen  
Fax: (+49) 212 28 02-28, Tel: (+49) 212 28 02-0

GE Medical Systems Ultrasound – United Kingdom:  
Fax: (+44) 1234 266261, Tel: (+44) 1234 340881

GE Medical Systems – America: Milwaukee, WI, USA  
Fax: (+1) 262 544 3384

GE Medical Systems – Asia:  
Tokyo, Japan – Fax: (+81) 3-3223-8524  
Shanghai, China – Fax: (+86) 21-5208 0582

Internet: [www.healthcare.com](http://www.healthcare.com)

General Electric Company reserves the right to make changes in specifications and features shown herein, or discontinue the product described at any time without notice or obligation. Contact your GE Representative for the most current information.

GE Medical Systems, a General Electric Company, going to market as GE Healthcare.

©2004 General Electric Company  
Printed in Austria 300-04-U008E