

# Vivid 7 Dimension '05

Cardiovascular ultrasound system



# Innovation from all dimensions.

Faster acquisitions. More cardiovascular information. Easier reporting. From image quality to review and reporting – the Vivid 7 Dimension '05 improves every dimension of your workflow.

**A magnitude of diagnostic information.  
In a heartbeat.**

Since the first Vivid™ system, with its raw data image quality and high frame rates, GE has demonstrated its commitment to cardiovascular ultrasound with annual breakthroughs. Continuous innovation designed to help clinicians assess cardiovascular anatomy and LV function with more accuracy and diagnostic confidence – while boosting productivity.

The Vivid 7 Dimension '05 proves this year is no different.

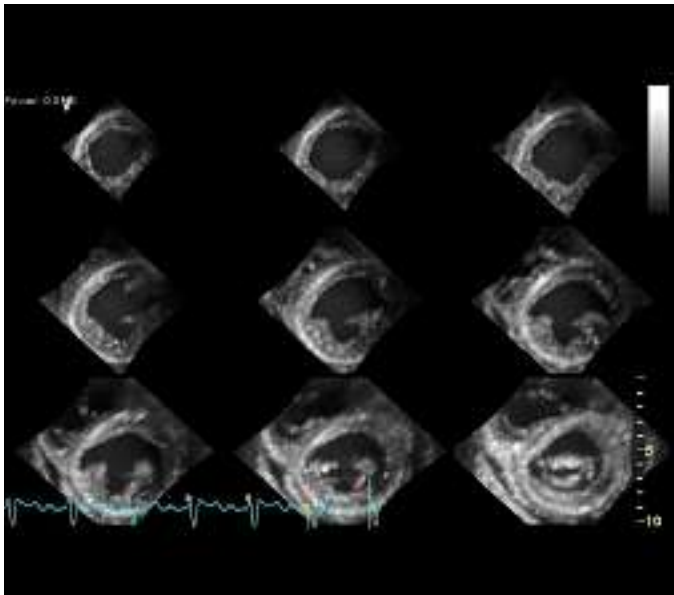


#### At the leading edge of healthcare

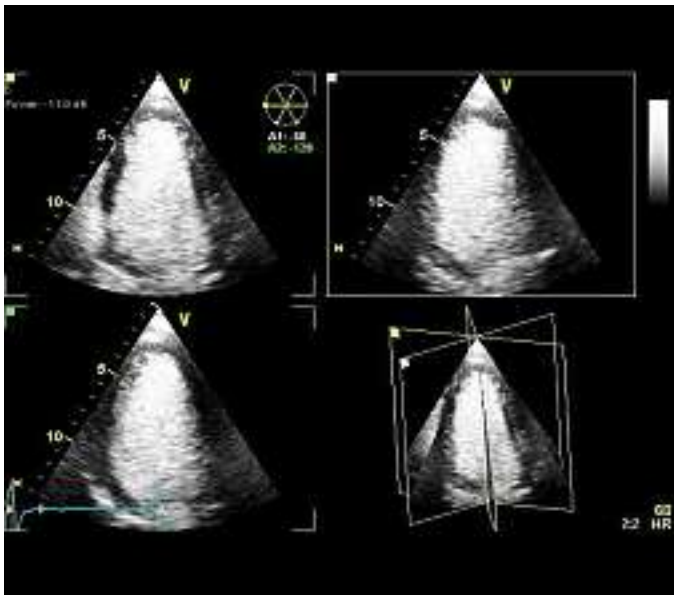
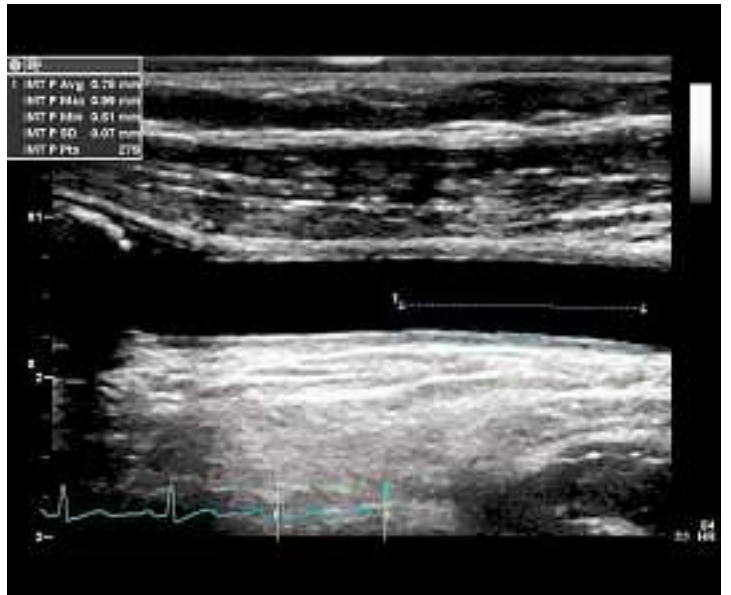
GE Healthcare is evolving. A pioneer in diagnostic imaging and information technologies, we are now at the forefront of molecular and genetic medicine as well. These capabilities will help shape a new age of healthcare in which disease is detected earlier, diagnosed more precisely, and treated less invasively.

Ultrasound will be at the heart of this transformation. And so will you.

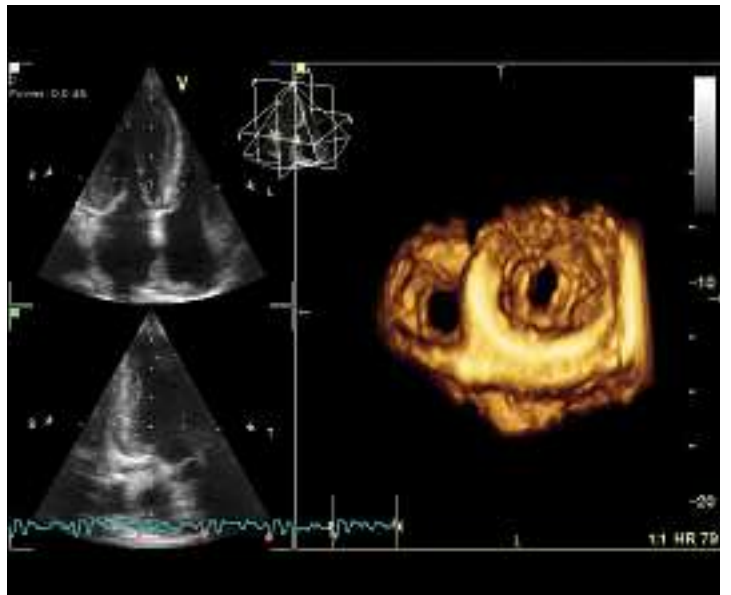
9 Slice displays the left ventricle in nine equidistant short axis views



Online measurement of carotid intima-media thickness (IMT)



Real-time 4D with Coded Phase Inversion (CPI)



4D colorize for image enhancement

**Our breakthroughs are always significant.  
But this year, they're profound.**

There's no other way to describe the Vivid system's new, vascular clinical tool that cuts hundreds of time-consuming manual measurements down to four simple steps.

This breakthrough IMT measuring technology slashes the time it takes to noninvasively measure the carotid artery's intima-media thickness, which studies show may be an early indication of atherosclerosis. It allows you to streamline workflow and assess cardiovascular health faster.

Our other breakthrough has a dramatic effect on image quality and your level of diagnostic confidence.

We've enhanced your contrast imaging capabilities by adding 4D CPI (Coded Phase Inversion) on your 3V transducer. Now, you can get excellent sensitivity, resolution and tissue suppression in 4D imaging. Contrast agents enhance visualization of the left ventricular border for wall motion analysis and ejection fraction calculations in 4D.

Two breakthroughs for streamlined, quality performances.

# Dramatic breakthroughs.



Real-time.

Our commitment to innovation drives us to push the boundaries of ultrasound imaging, constantly improving image quality. Providing more complete, artifact-free depictions of the entire heart – which led to last year’s introduction of multi-dimensional imaging.

With multi-dimensional imaging, you can simultaneously acquire bi-plane and tri-plane images from the same heartbeat – without moving the probe’s position – to get more cardiovascular information in less steps. By adding the dimension of time to three-dimensional imaging, GE delivered real-time 4D imaging.

Now, the Vivid 7 Dimension '05 advances this technology to produce 4D images that are incredibly lifelike. Cardiac images look more like the actual heart. So your clinical partners and patients have a clearer understanding of what they are seeing.

# Real-lifelike.

## **More real-life uses for multi-dimensional imaging.**

Multi-dimensional imaging formats can help you convey your findings through creative formats that better communicate cardiac anatomy, synchronicity and viability.

The new 9 Slice takes a 4D Full Volume dataset and slices the left ventricle into nine equidistant short axis views – to give you a whole new way of visualizing regional wall motion.

# Expanding your

We've broadened your Vivid 7 Dimension '05 system with capabilities for a full range of clinical applications, from abdominal to vascular imaging.

Now, in addition to IMT technology and 4D CPI, the Vivid 7 Dimension '05 delivers shared services imaging with our new 4C curved linear transducer, plus innovative image processing techniques to obtain a higher level of image quality.

- Multiple angle compound imaging processes cross-beam imaging, resulting in enhanced border definition, reduced acoustic artifact and improved contrast resolution.
- Speckle reduce imaging enhances image quality with an adaptive, real-time software algorithm that reduces the speckle artifact.
- BFI (Blood Flow Imaging) gives clinicians a better understanding and delineation of directional blood flow in vessels.

## **Remaining true to cardiology.**

We've also deepened your vision for cardiac imaging by enhancing 2D image quality with a new, ergonomically-designed M4S transducer that produces leadership-quality images for adult cardiac applications. Coded Octave Harmonics take GE's leading image quality to the next level, enhancing your images for color flow and Doppler imaging.

These clinical tools can improve your vision. And your diagnostic confidence.



vision.





# Step one. Less reporting steps.

The easy-to-use Vivid 7 Dimension '05 drives productivity with improved connectivity and reporting features that speed reading and report generation – and facilitate more efficient data management.

- New structured reports, with fast pull-down menus, automatically sort and insert information for more efficient report generation.
- Customizable normal report values permit the user to define measurement values in the report.
- MPEGvue allows you to export more compressed studies.
- eVue makes PC setup easier for remote interactive monitoring of images via network communication.
- DICOM connectivity, with embedded raw data storage, permits post-exam quantitative analysis on the Vivid 7 Dimension '05 system or the EchoPAC™ Dimension '05 workstation - whichever best fits your ultrasound lab workflow.

Because when it comes to busy ultrasound labs, time-saving technology is always a step in the right direction.

©2005 General Electric Company – All rights reserved.

General Electric Company reserves the right to make changes in specifications and features shown herein, or discontinue the product described at any time without notice or obligation.

GE, GE Monogram, Vivid™ and EchoPAC™ are trademarks of General Electric Company.

GE Medical Systems, a General Electric company, going to market as GE Healthcare.

GE Healthcare  
4855 W. Electric Ave  
Milwaukee, WI 53219  
USA  
Phone: 1 888 871 8266  
Fax: 414 647 4125

GE Ultraschall Deutschland  
GmbH & Co. KG  
Beethovenstr. 239  
D-42655 Solingen  
GERMANY  
Phone: (+49) 212 2802 0  
Fax: (+49) 212 2802 28

GE Healthcare  
Ultrasound Asia  
1105-1108, 11th Floor,  
Shanghai Maxdo Centre  
No. 8 Xin Yi Road  
Shanghai 200336  
CHINA  
Phone: (+86) 21 5257 4640  
Fax: (+86) 21 5208 0582

GE Medical Systems  
Ultrasound  
2, Napier Road  
Bedford MK 41 OSW  
United Kingdom  
Phone: (+44) 1234 340881  
Fax: (+44) 1234 266261

[www.gehealthcare.com](http://www.gehealthcare.com)

For more than 100 years, healthcare providers worldwide have relied on GE Healthcare for medical technology, services, and productivity solutions. So no matter what challenges your healthcare system faces, you can always count on GE to help you deliver the highest quality healthcare. For details, please contact your GE representative today.



GE imagination at work