

# Dinamap ProCare, Pro Series & Pro 1000



## Noninvasive Blood Pressure



**107365**  
Dual tube blood pressure tubing Adult/Pediatric, 3,6 m



**107368**  
Dual tube blood pressure tubing Neonatal, 3,6 m



**002779E**  
Dura-cuf, Adult, 2 TB, Screw, Royal blue (EA)  
**002774E**  
Navy (EA)  
**002791E**  
Wine (EA)



**2502** Soft-Cuf Small Adult cuff, size 17-25 cm, 20/box  
**2503** 23-33 cm, 20/box  
**2504** size 31-40 cm, 20/box



**2523** Soft-Cuf Neonatal, size 3, 6-11 cm, 20/box  
**2524** size 4, 7-13 cm, 20/box  
**2525** size 5, 8-15 cm, 20/box



**2462**  
SENSA-CUF Cuff, Small Adult, 2-Tube Screw Connector, Blue/Grey, 5/box  
**2464** Navy/Grey  
**2466** Rose/Grey

## Temperature ProSeries V1, Pro 1000 V1 & V2



**088012**  
Thermometer Probe Oral



**088016**  
Thermometer Probe Rectal



**088015**  
IVAC Temperature Probe covers, 5000/box

## Temperature ProCare, Pro Series V2 & Pro 1000 V3



**2008774-001**  
Turbo-Temp Oral Temperature Probe



**2008775-001**  
Turbo-Temp Rectal Temperature Probe



**088015**  
IVAC Temperature Probe covers, 5000/box

## Pulse Oximetry Nellcor ProSeries V1, Pro 1000 V1 & V2



**SCP-10**  
Interface cable  
Nellcor sensors



**70124021**  
NELLCOR SpO2-Sensor DS100A - Adult- Reu.(1/box)



**70124035**  
NELLCOR SpO2-Sensor OXI-A/N - Neo./Adult - Reu.(1/box)

## Pulse Oximetry Nellcor ProCare, ProSeries V2, Pro 1000 V3



**2008773-001**  
Interface cable Nellcor sensors DOC10



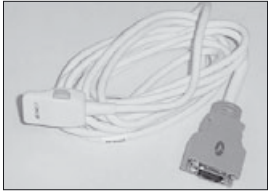
**70124021**  
NELLCOR SpO2-Sensor DS100A - Adult- Reu.(1/box)



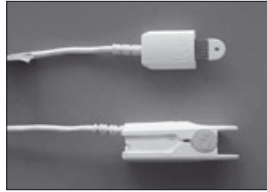
**70124035**  
NELLCOR SpO2-Sensor OXI-A/N - Neo./Adult - Reu.(1/box)



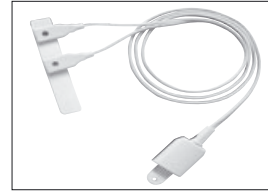
## Pulse Oximetry Masimo ProCare, ProSeries V3, Pro 1000 V3



**2009743-001**  
Masimo Interface cable  
PC08. 2,4 m



**2002799-001**  
MASIMO SpO2-Sensor  
Pediatric - Reusable  
Fingersensor (1/box)  
**2002800-001**  
Adult



**2010463-001**  
MASIMO SpO2-Sensor  
MULTISITE - Reu.(1/box)  
**2010470-001**  
MASIMO Standard Petite  
wrap Multisite LNOP-YI  
(100/box)

## ECG Patient Cables PRO 1000



**107327**  
3-Lead ECG patient  
Cable, 3 m, IEC

**107318**  
Pro 1000 Neonatal 3 lead cable w/ DIN connector

**107329**  
Leadwire Set/3, grabber  
connector, 60 cm, IEC

## Electrodes



**2014777-001**  
SilverTRACE adult  
electrode, SOFT P55MO,  
foam round, 300/case



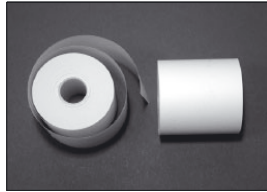
**900690-404**  
Electrodes, neonatal,  
cloth with DIN  
connector, 300/case

**900690-404**  
Electrodes, neonatal,  
cloth with DIN  
connector, 300/case

## Recording Chart Paper



**89100**  
Chart Paper, PRO Series  
Monitors & ProCare, 10  
rolls/box



**8736**  
Chart paper, Pro 1000  
Monitor, 10 rolls/box

## Pole Stand



**2014373-001**  
Pole Stand - ProCare  
**003215**  
Rolling Stand for  
Dinamap Pro Series and  
ProCare

CE marking indicating compliance with the Medical  
Device Directive 93/42/EEC.

GE Medical Systems Information Technologies GmbH  
Munzinger Strasse 3  
79111 Freiburg, Germany  
Tel. +49 761 4543 0 • Fax +49 761 4543 233

[www.gehealthcare.com](http://www.gehealthcare.com)

© 2006 General Electric Company – All rights reserved.  
GE and GE Monogram are trademarks of  
General Electric Company.

GE and GE Monogram are trademarks of General Electric  
Company.

GE Medical Systems Information Technologies GmbH,  
a General Electric company, going to market as  
GE Healthcare.

