

GE Healthcare

LOGIQ *e*

Compact Ultrasound System

Emergency Medicine



Image quality. Speed. Reliability.

LOGIQ e special features for emergency medicine imaging

Image quality

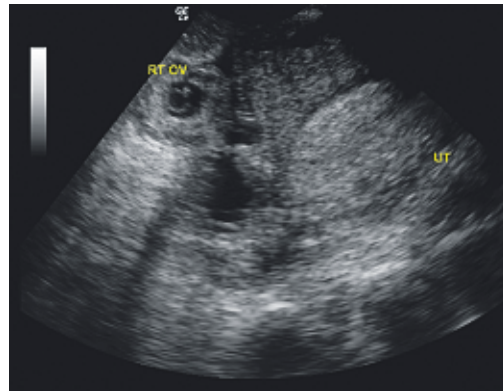
- Broadband, multi-frequency transducers with flexibility for all scanning applications.
- Visualize continuous boundaries, improved speckle reduction and better overall spatial resolution with CrossXBeam™.
- Coded Harmonic Imaging provides better sensitivity, improved tissue visualization and anatomical border definition.
- 15" display (1024 x 768 resolution) provides larger images and better viewing from distances and wide angles.
- Automatic image optimization with single push button control for patient specific image optimization in B-mode, color and spectral Doppler.
- Color Doppler for vessel identification automatically optimized for low or high flow states.
- Virtual convex on all linear transducers expands the image to include up to 20% more anatomy.

Productivity/Ease of use

- 20 second boot up time from cold start to scanning.
- USB Quick Save allows patient studies to be saved to a memory stick with the single push of a button.
- Image storage (> 40,000 images on board)
- Cine image storage (10-15 second loops)
- Media (AVI, JPEG, DICOM, raw data DICOM)
- Wireless DICOM allows images to be sent to PACS wirelessly.
- Raw data image storage allows images to be annotated, measured, or re-optimized after they are stored.
- Backlit keyboard for better visualization in dark conditions.
- Customizable application specific presets.



New 4C transducer demonstrates free abdominal fluid.



The E8C transducer's excellent image quality demonstrates a right ectopic pregnancy.



4C-RS



3S-RS



8L-RS



E8C-RS



i12L-RS

UNITED KINGDOM
GE Medical Systems Ultrasound
2, Napier Road, Bedford MK41 0JW
T 44 1234 340881, F 44 1234 266261

AMERICAS
GE Healthcare
9900 Innovation Drive
Wauwatosa, WI 53226, U.S.A.
T 1 888 202 5582

EUROPE
GE Ultraschall Deutschland GmbH & Co. KG
Beethovenstr. 239, 42655 Solingen
Germany
T 49 212-28 02-0, F 49 212-28 02 28

ASIA
GE Healthcare Clinical Systems ASIA
1105-1108 Maxdo Center
8 XingYi Road, Shanghai, 200336
T 86 21 5257 4640, F 86 21 5208 0582

www.gehealthcare.com

© 2006 General Electric Company – All rights reserved.
GE Healthcare, a division of General Electric Company.

General Electric Company reserves the right to make changes in specifications and features shown herein, or discontinue the product described at any time without notice or obligation. Contact your GE representative for the most current information.

GE, GE Monogram, LOGIQ and CrossXBeam are registered trademarks of General Electric Company.



GE imagination at work