

LOGIQworks

TruAccess Ultrasound Workstation



GE Medical Systems
Ultrasound

gemedical.com



LOGIQworks

*GE's Breakthrough
in Ultrasound
Information Management*

Now, you can easily add the power and efficiency of advanced ultrasound information management technology to your imaging department or entire healthcare enterprise with GE's innovative new LOGIQworks workstation.

LOGIQworks integrates GE's exclusive TruAccess raw data processing with the proven Centricity RA600 multimodality workstation to give you unprecedented clinical efficiency, flexibility and productivity in a single, integrated solution.

Revolutionary TruScan Architecture

TruAccess is part of GE's breakthrough TruScan Architecture, a new software-intensive architecture delivering unsurpassed image quality, image manipulation capabilities and workflow productivity.

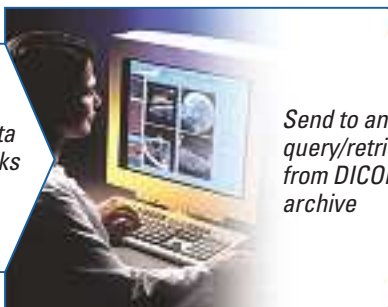
TruAccess captures all of the original raw image data early in the processing chain in its pure digital form. That means there's never a loss in the fidelity of the acquired data, no matter how it may have been manipulated and displayed.

TruScan Architecture



Send raw data to LOGIQworks via DICOM

Acquire images and volumes with TruScan ultrasound system



Send to and query/retrieve from DICOM archive

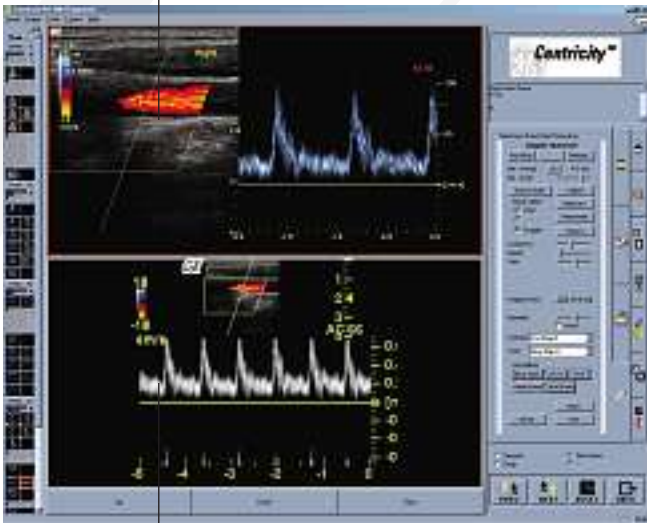
Manage raw image data, reprocess with TruAccess, review and read studies



Manage information with Centricity™ or existing PACS

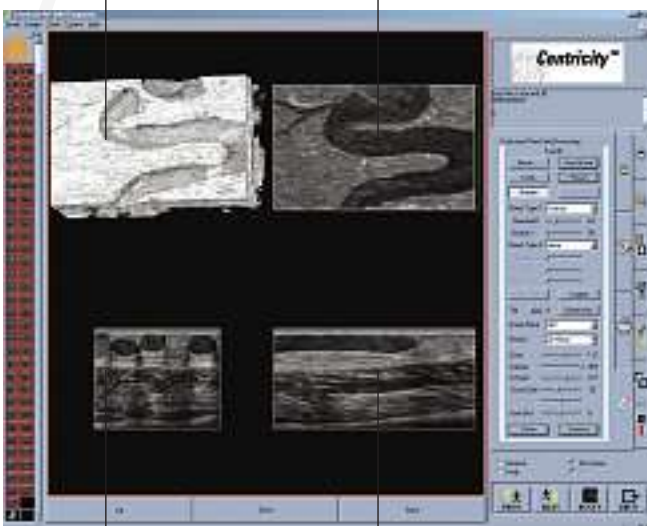
LOGIQworks: Redefining Ultrasound

TruAccess - adjusted baseline, sweep



Standard DICOM, with non-optimized settings

3D surface rendering C-plane



Transversal

Longitudinal

Plus the performance of GE Centricity

Integrate LOGIQworks with our scalable Centricity information management system for enterprise-wide workflow management and image storage, distribution and viewing.

LOGIQworks' open architecture utilizes industry standards such as Windows 2000, TCP/IP, DICOM and IHE to provide integration with existing scanners, modalities and PACS.

TruAccess raw data processing is integrated into LOGIQworks

Recall an archived image hours or even weeks later. TruAccess provides unprecedented flexibility to optimize image presentation at your workstation. For example:

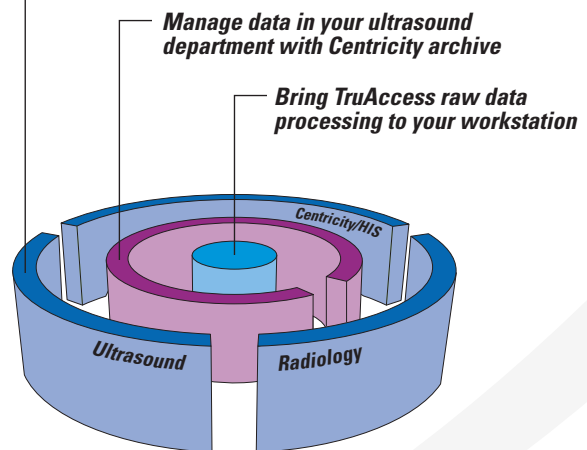
- Adjust overall B-mode gain, dynamic range and gray scale maps to enhance image data
- Change overall Doppler gain, baseline shift or sweep speed and invert the spectral waveform to fit department protocols
- Turn Color Flow display off to visualize underlying anatomy and/or pathology; plus invert and adjust display threshold
- Optimize images acquired under difficult scanning conditions
- Reprocess image data sets with scanner controls

Redefining workflow with 3D and TruAccess

Imagine... increasing your throughput by quickly acquiring an image volume on your TruScan system and sending the raw data to your workstation for processing and reconstruction.

- Rotate and reslice the volume to view any desired plane (e.g. C-plane)
- Easily generate surface rendering
- Perform quantitative measurements with the Tru3D option

Hospital-wide solution with GE PACS



Ultrasound Clinical Workflow



Breakthroughs backed by complete support.

The new LOGIQworks is another example of the constant stream of innovations from the scientists, engineers and sonographers at GE Medical System's Ultrasound business – breakthroughs that provide the superb image quality, clinical utility and department-wide productivity you are seeking.

World-class support – And like all our imaging systems, LOGIQworks is backed by world-class GE service, financing, applications training and continuing education. GE customers have long depended on our responsive on-site service support, as well as our pioneering InSite® remote diagnostics.

Unsurpassed quality – You also have the assurance of knowing that your GE equipment is the product of Six Sigma strategies, a philosophy of quality in the design and manufacture of our products to meet our customer's most exacting performance and reliability expectations.

Investment security – GE Medical Systems is a world leader in diagnostic imaging products and support. For more than 100 years, healthcare providers worldwide have relied on GE for high-quality imaging technology, services and productivity solutions. No matter what challenges your healthcare enterprise faces, you can always count on GE to help you deliver solutions of the highest quality.

Ask your GE representative for all the latest details or visit our website today – www.gemedical.com



GE Medical Systems
We bring good things to life.

General Electric Company reserves the right to make changes in specifications and features shown herein, or discontinue the product described at any time without notice or obligation. Contact your GE Representative for the most current information.

© Copyright 2003 General Electric Company
Printed in Austria 300-03-U004E

GE Medical Systems – USA:
4855 W Electric Avenue, Milwaukee, WI 53215
Fax: (+1) 262 544-3384

GE Medical Systems – Asia:
Tokyo, Japan – Fax: (+81) 3-3223-8524
Shanghai, China – Fax: (+86) 21-5208-0582

GE Medical Systems – Europe:
Beethovenstr. 239 – D-42655 Solingen, Germany
Fax: (+49) 212 2802-28, Tel: (+49) 212 2802-0
www.gemedicalsystemseurope.com