

GE Healthcare

# Accomplish More.

LOGIQ S6



# Demand more. Further Innovation.

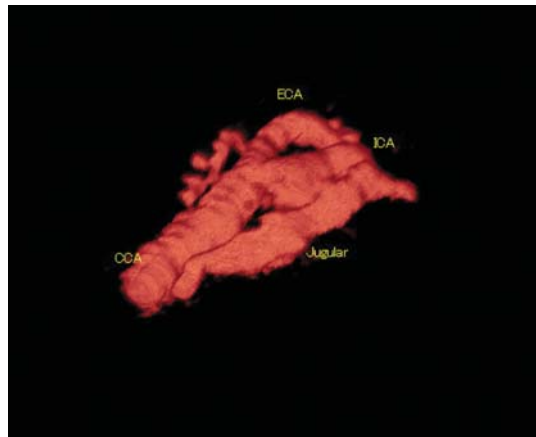
GE Healthcare is re-imagining ultrasound, introducing annual breakthroughs that are changing the way ultrasound happens. The LOGIQ® S6 is the latest evidence of our commitment to this goal.

Superior image quality is something you've come to expect from US, and we're more than happy to oblige. The LOGIQ S6 is an uncompromising system designed to provide high resolution imaging in applications ranging from small parts, musculoskeletal, abdominal, OB/GYN, vascular, basic cardiac, stress echo and TEE imaging.

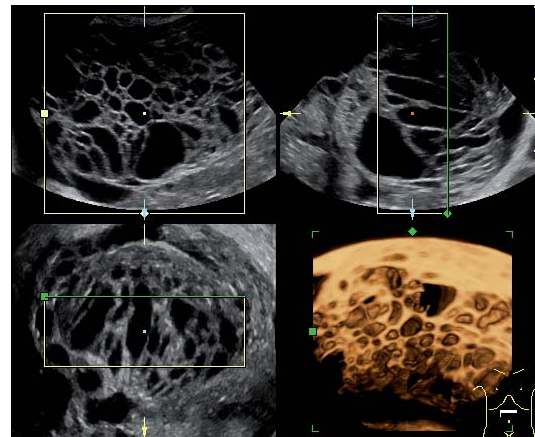


# See more.

Image quality is the cornerstone of the LOGIQ S6. GE has developed advanced technology that gives you improved resolution and superior image quality, for enhanced diagnostic capabilities that help you see more than ever before.



Carotid artery in 3D with PDI



Intra-abdominal polycystic tumor in Multiplanar Imaging

## Volume Ultrasound

LOGIQ S6 turns up the volume in ultrasound by integrating our Volume Ultrasound advancements with 2D optimization technologies – taking your facility into a new era of ultrasound.

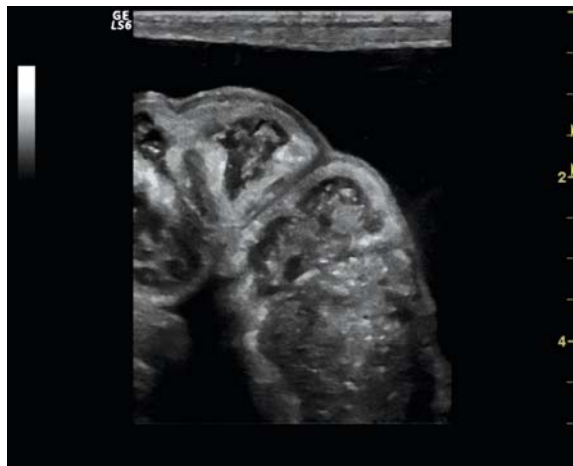
Now, you can acquire and construct volumetric data set instantaneously with 4D transducers, reconstruct volumes from raw data cine loops and manipulate data to view from sagittal, transverse or coronal, as well as oblique planes, to see anatomical relationships never before visualized.

### Our latest volume enhancements deliver more:

- Inversion Mode makes it easier to visualize volumes compared to conventional ultrasound techniques by automatically providing surface renderings of hypoechoic structures, beneficial for the evaluation of contiguous multiple cysts or irregular fluid collection.

# See more.

Exclusive GE Advanced Technologies enhance image quality.



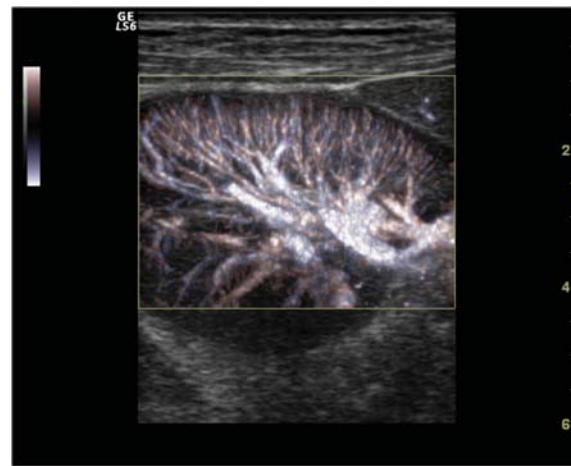
Multiple Layers of Large Bowel with SRI-HD and CrossXBeam

## CrossXBeam™

The GE's exclusive spatial compounding technology is an acquisition technique for enhancing anatomical margins which improves the appearance of physiological structures. A new Digital Compounding algorithm extends CrossXBeam™ advantages to Color Doppler examinations and Extended Field of View enabling you to get an unmatched image clarity and contrast resolution in any working modality.

## SRI-HD

High Definition Speckle Reduction Imaging heightens your visibility through high-definition contrast resolution. SRI-HD is a new adaptive, real-time software algorithm that suppresses speckle artifact while maintaining true tissue architecture.



Kidney vascular architecture with B-Flow Color

## Active Matrix Array

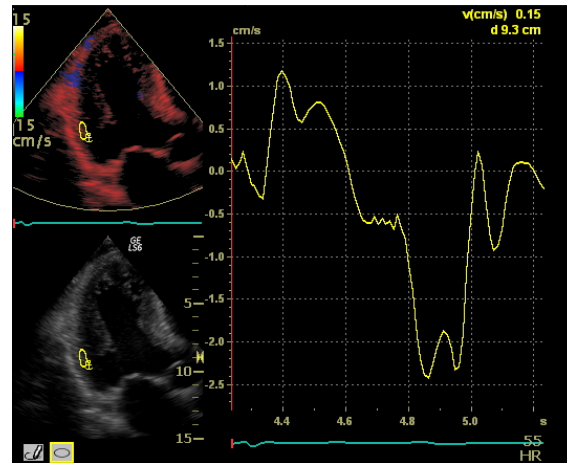
Matrix array transducer with multiple rows of elements helps you achieve uniform resolution throughout the field of view, which reduces volume averaging and improves overall image consistency in both near and far fields. GE's matrix technology diminishes the compromises between penetration and resolution.

## B-Flow

B-Flow, a unique GE technology, displays true Hemodynamics and provides direct visualization of blood reflectors by magnifying those blood reflectors 30 db (1000 times). A significant advantage for vascular studies, it eliminates color flow overwrite, frame-rate impact, and offers less angle dependence. In addition, GE's exclusive B-Flow Color adds color to the image to further enhance visualization of the blood reflectors. It also enhances B-Flow resolution and can be used during anatomical B-Mode scanning. B-Flow Color is part of GE's 3rd generation B-Flow coded ultrasound technology.



Liver FNH with Coded Phase Inversion (CPI) Imaging



Tissue Velocity Imaging quantification

### Contrast Enhanced Ultrasound

The extended Contrast Enhanced Package, including High and Low MI settings, allows you to easily get the information you look for.

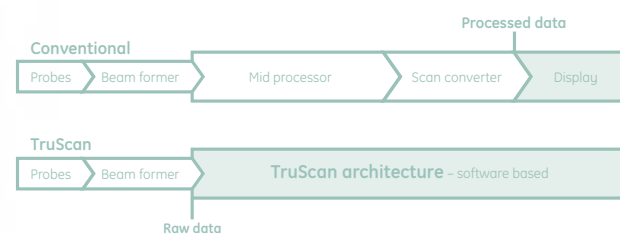
Based on the GE's exclusive Digital Encoded Ultrasound (DEU) technology, the Low MI techniques Coded Phase Inversion (CPI) and TruAgent Detection (TAD) enable to achieve an outstanding "signal-to-noise" ratio, penetration and image resolution. In addition, the new TruAgent Detection in DualView Mode provides a UNIQUE Real Time representation of the Contrast and Tissue contents simultaneously in a DUAL Display, enabling quick and confident performance in CEUS-guided interventions or in difficult to scan patients. The Time Intensity Curve "extended package" completes the onboard contrast agent capabilities by enabling you to set and analyze up to 8 simultaneous Regions Of Interest with numerous post-processing possibilities thanks to the exclusive TruScan™ Contrast RawData.

### Virtual rescans

GE's exclusive TruScan™ architecture makes the virtual rescans possible. TruScan allows raw image data to be stored early in the image chain for optimum flexibility during processing and analysis post exam. With access to raw data image, you are able to compensate for variations in image acquisition by virtually rescanning the patient after they have left the exam room.

Using raw data, the virtual rescans allow you to:

- Optimize images acquired under difficult scanning conditions: Modify B-Mode gain and dynamic range; Achieve one-touch Automatic Optimization; Adjust time gain controls; Add/modify SRI-HD
- Change baseline shift, sweep speed and Doppler gain
- Take measurements; add or edit annotations
- Analyze and manipulate volume data and construct 3D volume images from a cine loop
- Perform an off-line anatomical M-Mode scan from an archived cine loop



## GET MORE

With GE, you get more than a great ultrasound system, superb image quality and innovative tools and features – you get a full productivity and ergonomic solution.

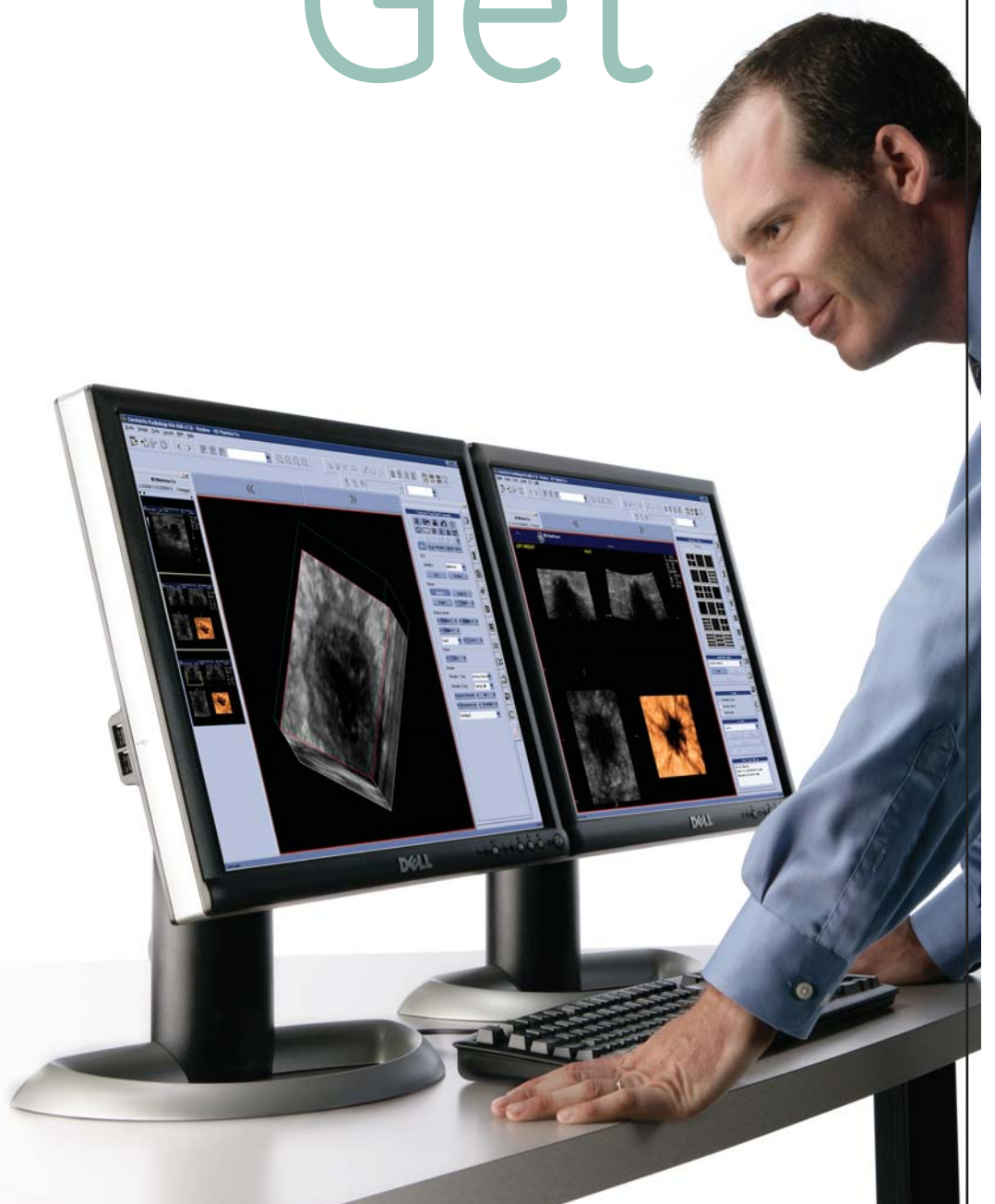
GET More in productivity means a full package of integrated functions to perform better and quicker your exam. One Touch Automatic Optimisation of the Image and Doppler, Auto TGC, Virtual Convex representation to increase your field of View and get more information at the same time; LOGIQView and CrossXBeam™ to increase the quality of your Panoramic Imaging; 3D Free Hand integrated capabilities to easily perform volume reconstructions ... and a powerful and flexible image management suite to easily handle the images and data you collected. In addition, by combining the expertise of the world's leading provider of healthcare IT and ultrasound systems, GE's unique combination of LOGIQ S6 and LOGIQworks™ offers a revolutionary workflow solution for today's ultrasound practice.

## GET More in ergonomics

With the power of GE's premium products in a smaller, more mobile scanner, the LOGIQ S6 can take your ultrasound practice to more places.

- A Easily transport or park your system with four highly mobile swivel wheels, two that automatically lock
- B Get a premium image quality with the High Resolution 17" CRT Monitor
- C Achieve one-touch efficiency from redundant keystrokes with High Resolution Color LCD screen interactive menus and programmable keys
- D Move through the friendly One-hand operations keyboard
- E Fully customize your own system measurements, graphics, reports

# Get





# more.

## **On hand expertise**

We have world-class ultrasound specialists on hand to answer your questions.

## **Continuing education**

GE Healthcare experts are here to help. More information about our mission in Education are available at [www.iamu.info](http://www.iamu.info), the new site to access the extensive Educational Program at the International Academy of Medical Ultrasound (IAMU), founded by GE Healthcare in 1996.

## **Making the dream reality**

We have a variety of financing options so you can have premier healthcare equipment in your facility today.

## **The GE Continuum is always working for you**

Our pursuit of new technologies ensures that you will always have access to pioneering developments.

**For more than a century, GE Healthcare has been inventing medical technologies. In ultrasound, our continuous stream of breakthroughs have redefined the standards for image quality, accelerated the development of new applications and increased clinical efficiency for users worldwide.**

GE Ultraschall Deutschland GmbH & Co. KG  
Beethovenstr. 239, D-42655 Solingen  
Fax: (+49) 212-28 02 28, Tel: (+49) 212-28 02-0

GE Medical Systems Ultrasound – United Kingdom  
Fax: (+44) 1234 266261, Tel: (+44) 1234 340881

GE Medical Systems – America:  
Milwaukee, WI, USA - Fax: (+1) 262 544-3384

GE Medical Systems – Asia:  
Tokyo, Japan – Fax: (+81) 3-3223-8524  
Shanghai, China – Fax:(+86) 21-5208 0582

Visit us online at: [www.gehealthcare.com](http://www.gehealthcare.com)

© 2006 General Electric Company – All rights reserved.

GE Healthcare, a division of General Electric Company.

General Electric Company reserves the right to make changes in specifications and features shown herein, or discontinue the product described at any time without notice or obligation. Contact your GE Representative for the most current information.

General Electric Company, doing business as GE Healthcare.

LOGIQ, TruScan, SRI-HD and CrossXBeam are trademarks of GE Healthcare.

## Healthcare Re-imagined

GE is dedicated to helping you transform healthcare delivery by driving critical breakthroughs in biology and technology. Our expertise in medical imaging and information technologies, medical diagnostics, patient monitoring systems, drug discovery, and biopharmaceutical manufacturing technologies is enabling healthcare professionals around the world discover new ways to predict, diagnose and treat disease earlier. We call this model of care “Early Health.”

The goal: to help clinicians detect disease earlier, access more information and intervene earlier with more targeted treatments, so they can help their patients live their lives to the fullest.

Re-think, Re-discover, Re-invent, Re-imagine.



GE imagination at work