

GE Healthcare

LOGIQ Book XP

Innovation in compact ultrasound



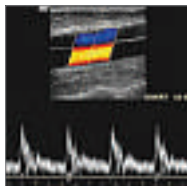
imagination at work



At the leading edge of healthcare



Clarity



Confidence



Simplicity



Speed

For more than a century, GE Healthcare has been inventing medical technologies. In Ultrasound, our continuous stream of breakthroughs have redefined the standards for image quality, accelerated the development of new applications and increased clinical efficiency for users worldwide.

As we see it, the future of ultrasound looks even more exciting.

GE Healthcare is evolving. A pioneer in diagnostic imaging and information technologies, we are now at the forefront of molecular and genetic medicine as well. These capabilities will help shape a new age of healthcare in which disease is detected earlier, diagnosed more precisely and treated less invasively.

Ultrasound will be at the heart of this transformation. And so will you.



High performance compact ultrasound... anywhere

LOGIQ Book XP provides you the next generation performance in a compact platform – exactly what you'd expect from the world leader in Ultrasound. The system is built on the software-based architecture that distinguishes GE's LOGIQ family of systems from all others.

LOGIQ Book XP's advanced platform is designed to provide new levels of clinical value and productivity for the most demanding healthcare environments.

Boundaryless scanning

Light & ultraportable system

Integrated networking solutions

Easy to use interface

Personalized presets

Ergonomic design

Flexible applications

Exceptional image quality

Versatile probe technology

Innovation. Freedom. Productivity.



Starting a patient exam is as fast and easy as opening a book



Attaching the probe allows the LOGIQ Book to auto-recognize the preset application



Optimizing image quality for clarity and confidence with the touch of a button



Putting images and reports at your fingertips with portable memory storage

Providing workflow flexibility and freedom with wireless DICOM and printing

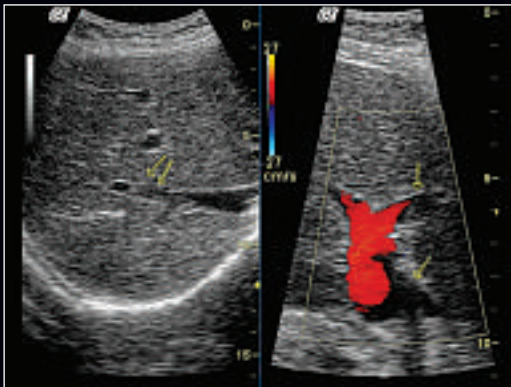
Go beyond the limits of conventional ultrasound

LOGIQ Book XP is proof that you can take the power of advanced ultrasound with you throughout your facility and beyond – without compromise. Now, you can bring ultrasound exams to your patients with ease. You'll have the confidence to make patient care decisions right in the palm of your hand.



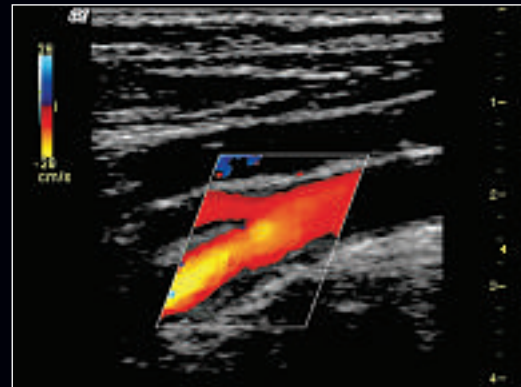
The picture of diagnostic confidence in compact ultrasound

Abdominal



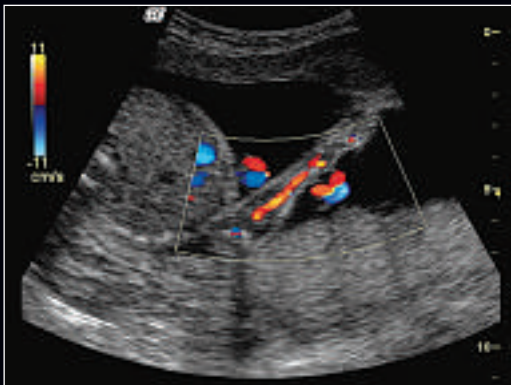
Excellent contrast resolution demonstrating portal vein thrombosis in this transplanted liver, 3C-RS.

Vascular



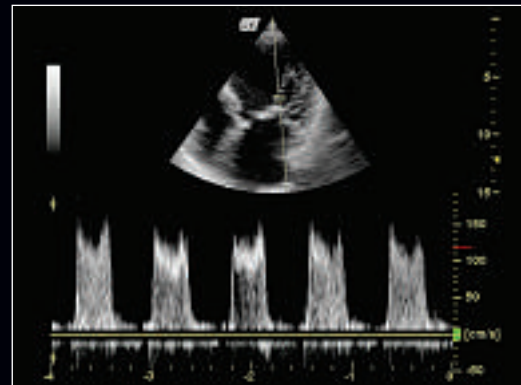
Sensitive color Doppler displays atherosclerosis disease within this internal carotid artery, 8L-RS.

Obstetrics / Gynecology



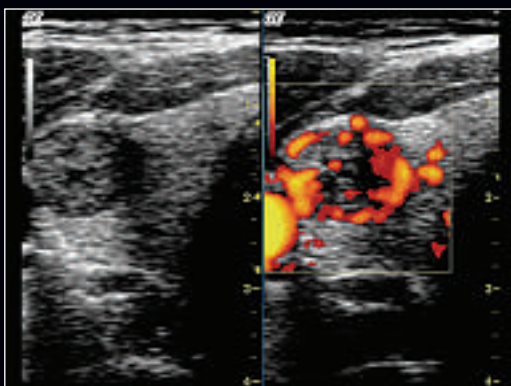
Optimal color resolution depicts arterial flow in this limb of a 21-week fetus, 3C-RS.

Cardiac



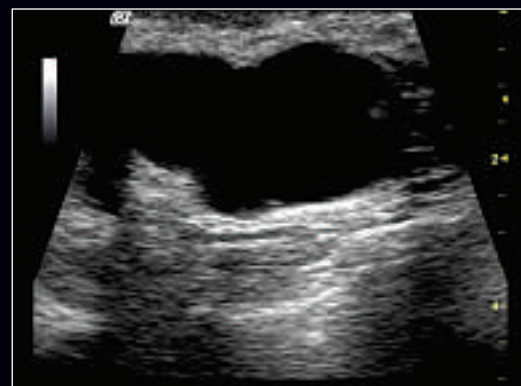
Mitral valve stenosis using phased array transducer, 3S-RS.

Thyroid



Simultaneous split screen showing fundamental and Power Doppler images of a thyroid nodule, 8L-RS.

Breast



Virtual Convex imaging feature utilized to scan complex breast mass, 8L-RS.

Clinical versatility



Abdominal



Obstetrics / Gynecology



Vascular



Cardiac

For more than 100 years, scientists and industry leaders have relied on General Electric for technology services and productivity solutions.

So no matter what challenges your healthcare system faces – you can always count on GE to help you deliver the highest quality healthcare.

For details, please contact your GE representative today.

GE Healthcare

Chalfont St. Giles
Buckinghamshire, UK
www.gehealthcare.com

General Electric Company reserves the right to make changes in specifications and features shown herein, or discontinue the product described at any time without notice or obligation. Contact your GE Representative for the most current information.

© Copyright 2004 General Electric Company
GE Healthcare, a division of General Electric Company.

04-9372 09/04 Printed in Austria

imagination at work

