

© 2005 General Electric Company – All rights reserved.
GE Healthcare, a division of General Electric Company.

General Electric Company reserves the right to make changes in specifications and features shown herein, or discontinue the product described at any time without notice or obligation. Contact your GE Representative for the most current information.

General Electric Company, doing business as GE Healthcare.

LOGIQ, TruScan and LOGIQview are trademarks of GE Healthcare.

GE Ultraschall Deutschland GmbH & Co. KG
Beethovenstr. 239
D-42655 Solingen
Tel: (+49) 212-28 02-0
Fax: (+49) 212-28 02 28

GE Medical Systems Ultrasound United Kingdom
Tel: (+44) 1234 340881
Fax: (+44) 1234 266261

GE Medical Systems – America:
Milwaukee, WI, USA
Fax: (+1) 262 544-3384

GE Medical Systems – Asia:
Tokyo, Japan
Fax: (+81) 3-3223-8524
Shanghai, China
Fax:(+86) 21-5208 0582

www.gehealthcare.com

For more than 100 years, scientists and industry leaders have relied on General Electric for technology, services and productivity solutions. So no matter what challenges your healthcare system faces – you can always count on GE to help deliver the highest quality services and support. For details, please contact your GE Healthcare representative today.



GE imagination at work

GE Healthcare

Portable performance

LOGIQ 3





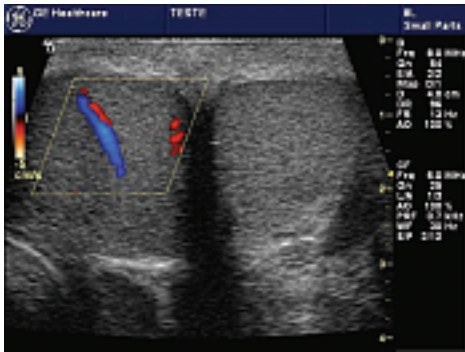
Portable performance

Digital imaging

Explore new possibilities in data analysis. With GE's exclusive TruScan™ architecture, the acquired image data is stored early in the imaging chain. Now, you can apply real-time techniques to archived, unprocessed image data, with no loss of fidelity. That means shorter scans for your patients and increased diagnostic confidence for you.

With LOGIQ 3 you can experience the power of digital data:

- Adjust B-Mode gain, dynamic range and gray-scale maps
- Change overall Doppler gain, baseline shift and sweep speed
- Adjust color flow mode
- Apply anatomical M-Mode to stored cine loops for heart rate measurements



Clear confidence

LOGIQ 3's advanced features expand your clinical capabilities to give you more options and more techniques to capture the image you need with clarity.

- Increased bandwidth allows the use of more frequencies to capture crisp images on even the most challenging patients
- Innovative new THI (Tissue Harmonic Imaging) filters suppress noise in the signal to boost contrast resolution throughout the image
- Improved gain distribution and focusing improve clarity and image quality, even on deep tissue imaging

Fast and productive

The LOGIQ 3 system takes advantage of adaptive processing techniques that help you productively acquire the very best images in the least possible time. By minimizing operator dependent variability, our suite of software driven features enhances your overall image quality and exam consistency:

- Automatic Optimization provides one-touch image refinement for B-Mode, color Doppler and pulse wave Doppler studies
- Automatic Doppler calculations, makes spectral measurements simple and accurate
- Anatomical M-Mode provides accurate, anatomically correct measurements regardless of orientation
- Fast boot-up speeds start up for portable exams
- Virtual convex and LOGIQView™ features expand your field of view providing additional B-Mode information and anatomical references
- DICOM formatting ensures efficient data transfer

More comfort

A system should work comfortably for clinicians. That's why GE designed LOGIQ 3 to optimize operator comfort, safety and convenience – with user-adaptable, ergonomic features, including:

- 15-inch, high-resolution color display for clear viewing from any angle
- Intuitive keyboard design facilitates single-hand operation
- 3 probe ports enables up to 3 probes to be connected at once
- New graphical display presents data at a glance
- CDR drive and USB port make archiving data from the hard drive easy
- Highly maneuverable, highly mobile four-wheeled platform makes portable exams easy



Proven Partner

GE Healthcare's continuous stream of ultrasound breakthroughs has redefined the standards for image quality, accelerated development of new applications and increased clinical efficiency for users worldwide.

Our exclusive software-based approach provides a clear upgrade path, so you can add new cutting-edge clinical capabilities quickly and easily. With GE's LOGIQ family, it's simple to scan state-of-the-art, now and into the future.

For more information about our LOGIQ 3 ultrasound solution, contact your GE Healthcare representative or visit us on the web at www.gehealthcare.com/ultrasound.

