

# Professionalism, PROductivity and PROgress

Like all our PRO Series systems, the **LOGIQ 200 PRO** draws upon the LOGIQ 700 PRO's breakthrough technologies to deliver consistently excellent image quality, extraordinary ease of use and access to the applications of the future. Our goal: enhancing your diagnostic confidence and productivity while helping you achieve a superb return on your investment in advanced ultrasound technology.

## PROgress

*Future orientation and visionary thinking have been hallmarks of GE. This can be traced back to the genius Thomas Alva Edison, one of GE's founders more than a century ago.*

*Following this tradition, the LOGIQ 200 PRO Series provides such innovative tools as a Digital Beamformer, Automatic Tissue Optimization (ATO) and Picture-in-Picture (PiP).*

*The LOGIQ 200 PRO Series puts you instantly at the forefront of technology!*

### Investment protection

*As a key business unit of GE, we offer comprehensive solutions for optimum investment protection. Among the most important: the tailored financing offered by GE Capital, intelligent services such as the pioneering InSite™ remote service, DICOM compliance, and a consistent upgrade concept, thus helping you stay easily and affordably at the forefront of ultrasound technology, year over year.*

*Help ensure a strong return on investment by choosing GE!*



**Digital archiving of images on MOD - the most modern, best in quality and safest way of storage, cost-efficient and easy to use.**

## PRO GE Ultrasound

**THE RIGHT DECISION**

**FOR MAXIMIZING YOUR PROFESSIONALISM,  
PRODUCTIVITY, AND PROGRESS**



The LOGIQ 200 PRO Series is just one more example of the innovations evolving regularly from our research laboratories and clinical partnerships. It's also an excellent example of GE Ultrasound's Breakthrough philosophy – our commitment to introducing at least one technological breakthrough every year, to improve your diagnostic confidence, make you more productive, and help you stay affordably at the forefront of ultrasound-imaging technology.

Equally important, the LOGIQ 200 PRO Series is backed by the full support of GE, including:

- Our pioneering InSite remote service, upgrade and applications-assistance network, which provides immediate online support to customers worldwide
- Fast, reliable local service, rendered by highly experienced field engineers
- Complete applications training and support
- Custom-tailored financing solutions

### A century of support

GE Medical Systems is a world leader in diagnostic imaging products and support. For more than 100 years, healthcare providers have relied on GE for high-quality imaging technology, services and productivity solutions.

No matter what challenges your healthcare system faces, you can always count on GE to help you deliver care of the highest quality.

Ask your GE representative for details today.



**six sigma**  
*The way we work*

The LOGIQ 200 PRO Series is another product of our Six Sigma quality strategy.



**GE Medical Systems**  
*Ultrasound*

General Electric Company reserves the right to make changes in specifications and features shown herein, or discontinue the product at any time without notice or obligation.  
Contact your GE Representative for the most current information.

© 1999 General Electric Company

GE Medical Systems - America: Milwaukee, WI, USA  
Fax: (+1) 262 544 3384

Printed in Austria - 99U012-E

GE Ultraschall Deutschland GmbH & Co. KG:  
Beethovenstr. 239, D-42655 Solingen  
Fax: (+49) 212 28 02 28, Tel: (+49) 212 28 02-0

GE Medical Systems Ultrasound - United Kingdom:  
Fax: (+44) 1234 266261, Tel: (+44) 1234 340881

GE Medical Systems - Asia:  
Tokyo, Japan - Fax: (+81) 3-3223-8524  
Shanghai, China - Fax: (+86) 21-5208 0582

Internet: [www.gemedical.com](http://www.gemedical.com)

# LOGIQ 200 PRO SERIES

DIGITAL ULTRASOUND SYSTEM



## Harness the power of PROfe

Introducing the **LOGIQ 200 PRO Series** – the newest and most affordable member in our family of advanced digital ultrasound systems, designed to provide you with precisely the capabilities you need.

### PROfessionalism

#### *Diagnostic confidence*

*In your daily work, the highest priority is given to diagnostic confidence, in other words, to the reliability and accuracy of the displayed image data. This is why we have migrated some of the LOGIQ 700 system's most advanced and innovative technologies to precisely focus the LOGIQ 200's ultrasound beam.*

*LOGIQ 200 PRO Series – the system solution that delivers what you've been looking for.*

#### *Price-performance ratio*

*Using highly integrated components, we have achieved outstanding performance while keeping production costs to a minimum. The result: you can achieve optimum image quality and productivity, even on a limited budget.*

*Earn an excellent return on investment!*

### PROductivity

*Advanced technology does not necessarily have to be complicated.*

*The LOGIQ 200 PRO Series represents a revolutionary synthesis of high technology and functionality. Its user interface is very easy to learn, promoting consistent diagnostic quality from the start.*

*Choose the system that gives you time for the personal side of patient care.*

#### *Productivity enhancements*

*The LOGIQ 200 PRO Series comes with a variety of innovative system functions that not only improve its diagnostic utility, but also increase productivity and patient throughput.*

*Select the system that meets the demands of today's healthcare system!*



**GE Medical Systems**  
Ultrasound

[gemedical.com](http://gemedical.com)



*Homogeneous focusing of the image in the near and far field by using the Digital Beamformer, which continuously compensates the time differences of the reflected signals software-controlled and with the highest precision.*



*ATO enables the optimisation of image characteristics by means of online computer analysis of image data - by simply one press of a button.*

# PROfessionalism: Offering you superior image quality

## DIGITAL BEAMFORMER: UNIFORM RESOLUTION



In ultrasound imaging, each echo from the body returns to the transducer in a convex shape, which means that the individual crystals receive the same signal at different points in time. Using a conventional analogue Beamformer with simple static components, accurate time compensation can be achieved for only a few pre-defined distances. Except for signals detected by these time-compensated receive foci, echoes in the lateral and axial plane will produce blurred visualization.

The LOGIQ 200 PRO's high-precision, Digital Beamformer, on the other hand, digitizes echoes at the individual crystal level to help ensure uniform lateral, axial and temporal resolution from near-field to far-field, at depths of up to 20 cm. Dynamic receive focusing continuously compensates for the temporal differences of the returned signals to further enhance image quality.

**The result:** Homogeneous lateral and axial resolution from the body surface to depths of 20.

## SIX SIGMA QUALITY

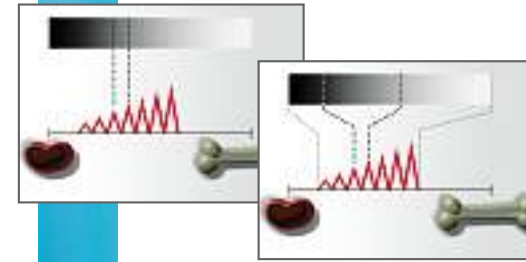


Confident diagnostics require compromise-free design, manufacturing and installation. This is why the new LOGIQ 200 PRO Series is a product of our Six Sigma quality strategy, which helps ensure an error frequency lower than standard deviation by factor 6.

**The result:** Premium quality for routinely excellent diagnostic confidence.

# PROductivity: Saving your staff valuable time

## AUTOMATIC TISSUE OPTIMIZATION: JUST TOUCH A BUTTON



Another GE exclusive, Automatic Tissue Optimization (ATO) automatically adjusts the imaging parameters to display the optimal image quality for the tissue type being imaged - for every patient, every exam, every operator.

**The result:** Ease of use, time savings and improved diagnostic confidence.

## PICTURE-IN-PICTURE: A FRAME OF REFERENCE



With Picture-in-Picture (PiP), you can zoom in on any region of interest without losing sight of the original image. That means you can maintain your frame of reference while taking a close look at the anatomy under study, saving valuable time in the process.

**The result:** Faster, easier procedures.

## EXPANDED REPORTING: SWITCH & SCAN



The LOGIQ 200 PRO is compact enough to be moved quickly from location to location, including patients' rooms. Once you get there, it's ready for use in just seconds. Even changing probes is ultra-fast - simply switch and scan. That means you can spend less time on set-up, more time making your patients comfortable.

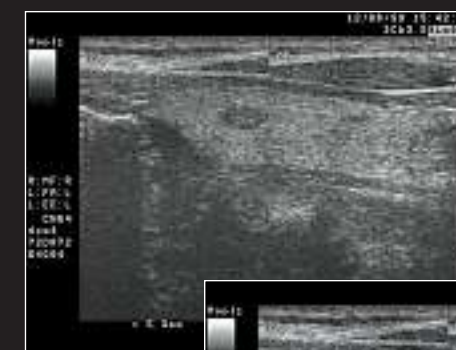
**The result:** More time for the personal side of patient care.



*The homogeneous resolution in all penetration depths takes diagnostic confidence to a new level, as seen in this parenchyma.*



*Detailed display of the ovaries using the 6,5 MHz transvaginal probe.*



*Auto Optimization provides an improved visualization of lesions.*



*The parasternal longitudinal scan in the M-mode demonstrates an excellent diagnostic possibility in cardiology provided by the sector phased array probe.*

